

Installation Instructions: 10200-10235

Date	Revision
21.6.24	1

Read these instructions before installation and retain for future reference

This equipment should be installed by a competent electrician



Important Information

We recommend that luminaires are installed by a qualified electrician ensuring the installation complies with current IEE wiring regulations BS7671:2018 & local building control.

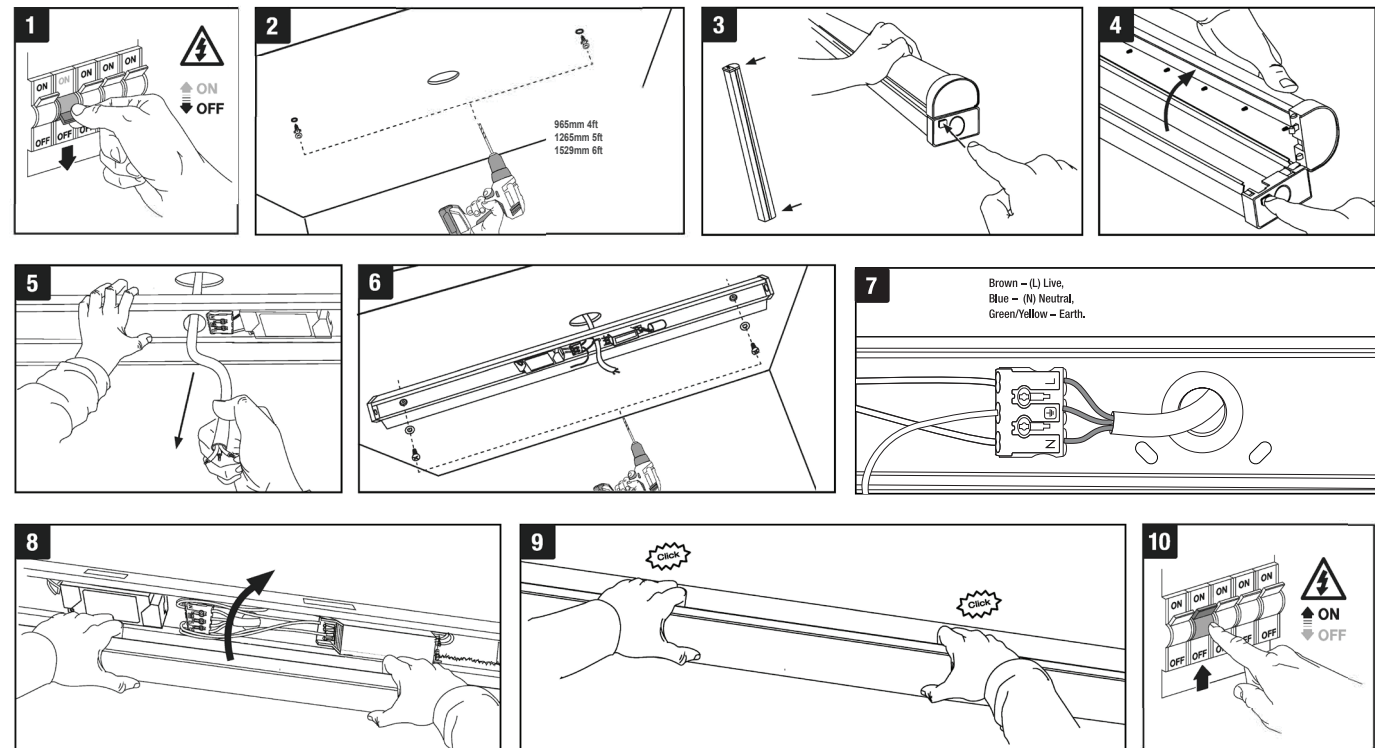
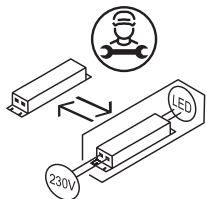
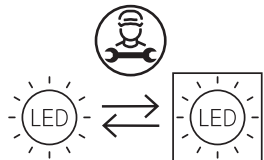
- All tests should be carried out in accordance to EN 50172:2004.
- BELL will not accept responsibility for any claims arising from poor installation..

Important User Advice

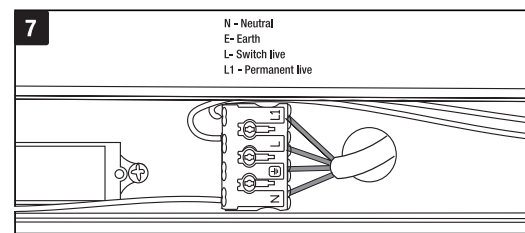
- The ambient room temperature should not exceed 35°C.
- Ensure that there is adequate free air ventilation around the fitting.
- Always switch off mains supply before installing.

This product may contain substances that can be hazardous to the environment if not disposed of properly. Electrical and electronic equipment should never be disposed of with general household waste but must be separated for its correct treatment and recovery.

Where possible recycle your packaging.



Microwave On/Off Sensor



Emergency Version

Detection Area

	1	2	
ON	ON	ON	100%
ON	ON	—	75%
ON	—	—	50%
—	—	—	25%

Hold Time

	3	4	5	
ON	ON	ON	ON	5s
ON	ON	ON	—	30s
ON	ON	—	—	90s
ON	—	—	—	3min
ON	ON	—	—	20min
—	—	—	—	30min

Daylight Sensor

	6	7	8	
ON	ON	ON	ON	2lux
ON	ON	ON	—	10lux
ON	ON	—	—	25lux
ON	—	—	—	50lux
—	—	—	—	Disable

When set to disable, the daylight sensor will switch on the lamp when motion is detected regardless of ambient light level.

Technical Helpline +44 (0)1924 893380

www.belllighting.co.uk

British Electric Lamps Ltd
BELL House, Foxbridge Way, Normanton Industrial Estate
Normanton, West Yorkshire. WF6 1TN

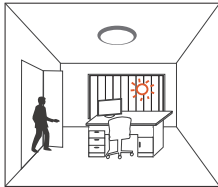
T: +44 (0)1924 893380 F: +44 (0)1924 894320 E: sales@belllighting.co.uk

www.belllighting.co.uk

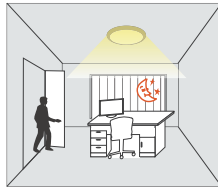


Microwave Corridor Dim Sensor

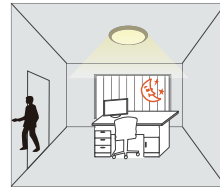
Step-Dim function (Corridor Function)



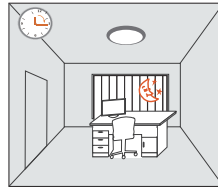
The light keeps off during daytime even when movement is detected. (Ambient lux level is above preset daylight threshold)



With movement and insufficient ambient lux level, the light is triggered on 100% by the detector.

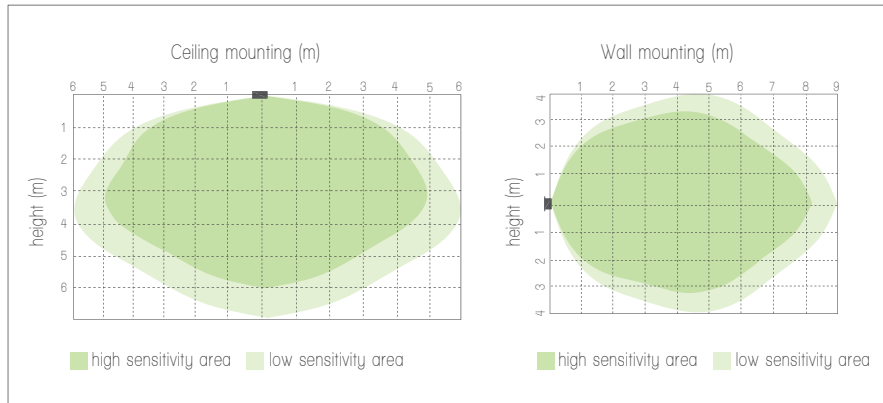


If there is no more movement, the light dims to stand-by dimming level after hold-time.



The light turns off automatically after stand-by time.

Detection Pattern



1. Sensitivity

Sensitivity can be adjusted by selecting the combination on the DIP switches for different applications.

I – 100%
II – 50%

	1	
I	●	100%
II	○	50%

2. Hold-time

Hold-time refers to the time period that the light remains 100% on if no more movement is detected.

I – 5s
II – 90s
III – 5min
IV – 15min

	2	3	
I	●	●	5s
II	○	○	90s
III	○	●	5min
IV	○	○	15min

3. Daylight threshold

Different daylight threshold can be preset on DIP switches. Light will always turn on upon movement if daylight sensor is disabled.

I – Disable
II – 50Lux
III – 20Lux
IV – 5Lux

	4	5	
I	●	●	Disable
II	○	○	50Lux
III	○	●	20Lux
IV	○	○	5Lux

4. Stand-by time

This is the time period that the light remains at a low level before it is completely turned off.

I – 0s
II – 10s
III – 10min
IV – +∞

	6	7	
I	●	●	0s
II	○	○	10s
III	○	●	10min
IV	○	○	+∞

5. Stand-by dimming level

Light can be dimmed to different levels after hold-time.

I – 10%
II – 30%

	8	
I	●	10%
II	○	30%

Read these instructions before installation and retain for future reference

This equipment should be installed by a competent electrician



Testing & Commissioning for Emergency Luminaire

- Ensure the Load is connected.
- Connect the battery.
- Switch on the Unswitched Supply
 - Check the Charge LED illuminates.
- Switch on the Maintained Supply
 - Check the LED illuminates as normal.
- Switch off the Maintained Supply.
- Switch off the Unswitched Supply
 - Check the Charge LED extinguishes and the load LED illuminates at a reduced output.
- Enter the commissioning date on the Battery Pack.
- Switch on the Unswitched Supply

Luminaire Ref/Location	In Case of difficulty, contact the Installation Engineers:- Tel: _____									
Full Recharge Time 24 Hours	Duration 3 Hours					Lamp Type - LED				
ROUTINE TEST RECORD										
	Year 1		Year 2		Year 3		Year 4		Year 5	
Monthly Test	Signed	Date	Signed	Date	Signed	Date	Signed	Date	Signed	Date
Functional										
Functional										
Functional										
Functional										
Functional										
Functional										
Functional										
Functional										
Functional										
Functional										
Functional										
Functional										
Three Hour										